



CALL 1-888-710-5192

SEARCH

HOME

ABOUT

EXTRA TIPS

SITE MAP

VIEW CART

CONTACT US

## QUICK LINKS

Home  
 Touch Up Paint (1/2 oz. Bottles)  
 Touch Up Paint (2 oz. Bottles)  
 Paint Pens  
 Aerosol Spray Paint  
 Auto Paint (For Spray Guns)  
 Body And Bumper Repair  
 Sandpaper  
 Paint Codes  
 Directions For Use  
 View Cart

WELCOME TO AUTOMOTIVETOUCHUP

## Paint Codes Locations For Chevrolet

The paint code for all Chevy cars and trucks are located on the service parts identification sticker. While the sticker is moved around from year to year, it still looks like the ones below. Most labels are white paper sticker, while more modern ones are a silver label. While most paint codes in our database start out with a "WA", most cars and trucks will start out with a "BC/CC U". BC/CC stands for basecoat/clearcoat, and the U stands for upper or body color.

**Two Tone Models:** A two toned car will have a "U" followed by the four digit color code for the body color, and an "L" followed by a four digit color code for the lower color or the bumper color.

For a list of touch up paint colors for your **Chevrolet** go here:

<http://www.automotivetouchup.com/choosecolor/year.aspx?make=Chevrolet>.

**SEARCH**  
 FOR YOUR PAINT COLOR NOW!

2010

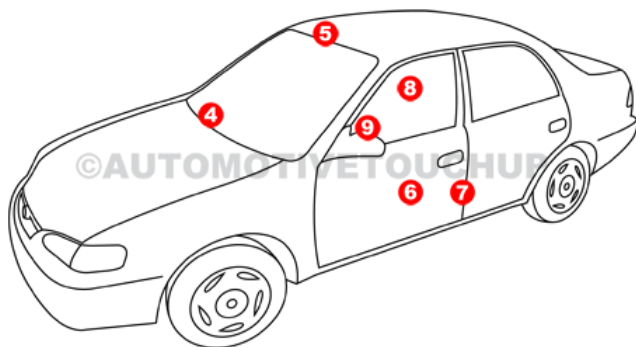
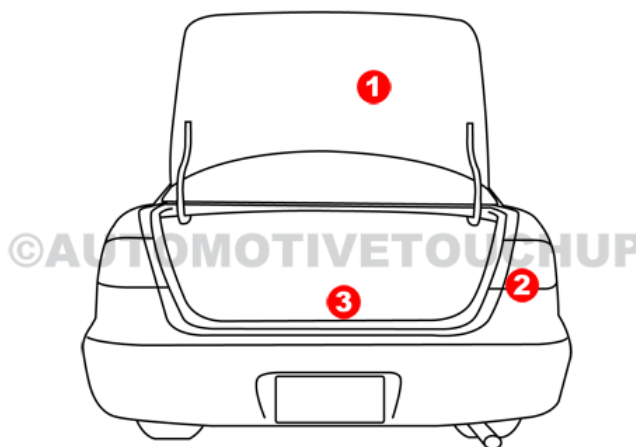
Chevrolet

Camaro

SEARCH

**FREE SHIPPING**

ON ALL ORDERS OVER \$100



## Chevrolet

**All Trucks:** #4 glove box

**Asto:** Passenger Door Rear Face

**Avalanche:** #4 glove box

**Aveo:** #4 glove box

**Beretta:** #3 on spare tire cover

**Blazer:** #4 glove box

**Camaro:** #9 Rear of Middle Console, #7 driver side door jamb, #4 glove box, #9 middle console

**Caprice:** #1 under trunk lid

**Cavalier:** #4 Glove Box, spare tire cover

**Celebrity Sedan:** #3 spare tire cover

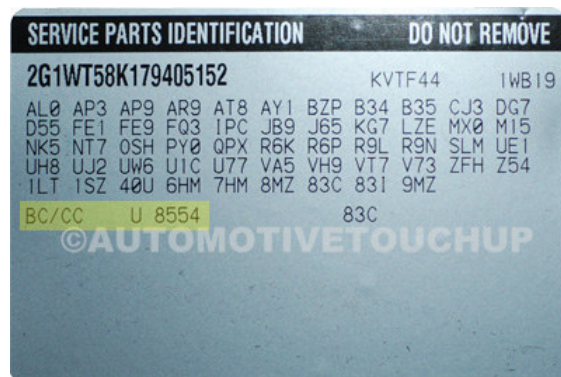
**Chevette:** #3 spare tire cover

**Classic:** #3 spare tire cover or #3 spare tire wheel well

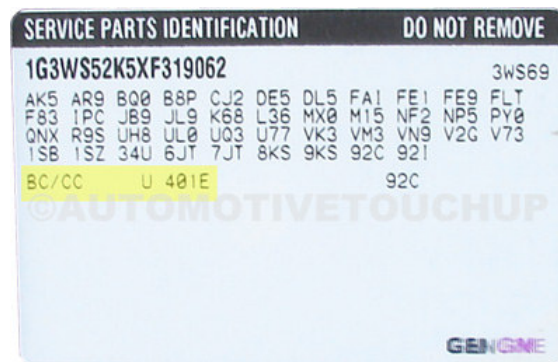
**Cobalt:** #3 trunk floor Under carpet

**Colorado:** #4 glove box

**Corsica:** #3 spare tire cover  
**Corvette:** #4 Glove Box, #9 Rear of Middle Console, top of drive shaft tunnel, under rear storage compartment, #1 under trunk lid, left compartment rear lid  
**El Camino:** #4 glove box  
**Epica:** #4 glove box  
**Equinox:** glove box  
**Express:** #8 Rear Face of Right Door, #8 B pillar face, #6 under driver seat  
**HHR:** #4 glove box  
**Impala:** #4 glove box, #3 under trunk lid, #7 driver's door  
**Kodiak:** Behind Driver Seat, #8 side wall of cab or lower corner of cab wall behind passenger seat  
**Lumina sedan:** #4 Glove Box, #3 spare tire cover, or #1 trunk lid  
**Lumina Van:** inside jack cover  
**Malibu:** #4 Glove Box, #3 spare tire cover, #3 spare tire wheel well  
**Metro:** #4 Glove Box, #3 spare tire cover  
**Monte Carlo:** #1 Inside trunk Deck Lid or #3 spare tire cover  
**Nova:** #3 spare tire cover  
**Optra:** #4 glove box  
**Prism:** #4 Glove Box, #3 spare tire cover, or #1 trunk lid  
**S10:** #4 Glove Box  
**S10 blazer:** #4 Glove Box  
**S10 pickup:** #4 Glove Box  
**Silverado:** #4 Glove Box  
**SSR:** #4 Glove Box  
**Suburban:** #4 Glove Box  
**Tahoe:** #4 Glove Box  
**Tracker:** #5 Right Hand Sun Visor, #4 glove box  
**Trailblazer:** #4 Glove Box  
**Uplander:** #4 glove box  
**Venture:** Left Rear Storage Compartment Inside Door



This Paint code is U8554 or WA8554.



This paint code is U401E or WA401E.

[About Us](#) | [FAQ](#) | [E-Store Policies](#) | [Read / Leave Feedback](#) | [Affiliates](#) | [Link To Us](#) | [Privacy Policy](#)



This website is property of and maintained by <http://www.automotivetouchup.com>, a Microfinish LLC Company © 2002-2009.  
 Any questions or comments email [web@automotivetouchup.com](mailto:web@automotivetouchup.com) Call Toll Free 1-888-710-5192