



2010 CAMARO 

DETAILS BOOK

Updated 3/16/09



» MESSAGE FROM CAMARO MARKETING TEAM

The 2010 Camaro sets a new standard of performance and refinement in its class. It has the performance and image that Camaro fans demand, plus the advanced technology and safety features that enhance the driving experience for different customers.

The 2010 Camaro comes in three trim levels, offers either a V6 or a V8 engine and is available with either a 6-speed manual or a 6-speed automatic transmission. This range of powertrain options allows Camaro to be equipped for the performance-oriented customer or for a customer who wants a good-looking ride with responsive handling and unmistakable style.

The Camaro name has a rich heritage that brings an image to most customers' minds, even if they've never owned a Camaro or any other sports car. As the new Camaro takes center stage, it brings a long history of performance and sharp good-looks. The new Camaro's evolutionary and revolutionary design takes classic design cues and reinvents them with a modern interpretation. The Camaro is not just a performance machine—it's a true 21st Century Sports Car.

» TABLE OF CONTENTS

Three Key Messages.....	1
Two Types of Buyers.....	2
Design	3
Performance	8
Technology.....	14
Quality, Reliability and Durability.....	18
Safety.....	20
Trim Levels.....	24
Comparison Spec Charts.....	26
Accessories	28

» THREE KEY MESSAGES

All car shoppers have different sets of priorities when looking for a vehicle and it's up to you to be ready to address these priorities based on their personal desires and needs. Once you have determined their motivations, you should highlight what attracted them to the car and point out other features that may interest them.

To help this process, we have three key messages that will help you organize Camaro features and benefits for a quick information download for your customers.

DISTINCT DESIGN

- **Iconic design** is thoroughly modern, but with the **soul** that only Camaro can bring.
- **Clean, creased lines**, broad shoulders featuring a one-piece rear quarter, V-shape grille and low-slung stance create a **sleek but powerful presence**, accentuated by large 18-, 19- or 20-inch wheels.
- **Striking features** such as **HID halo-ring headlamps** (with RS package) and standard **dual polished exhaust tips** punctuate head-turning style.
- **Tight gaps and quality materials** show unparalleled **attention to detail**.
- **A beautiful interior** with timeless analog gauges, a well thought-out instrument panel, and available sunroof combines **style and functionality**.

CUTTING-EDGE TECHNOLOGY

- **Bluetooth®**: Pair your cell phone to Camaro for preferred **hands-free calling**.
- **USB port**: Control song selection on an **iPod®** and other devices using integrated steering wheel controls through GM's PDIM (Preferred Device Interface Module).
- **Boston Acoustics®**: Available **premium sound system** with nine speakers and 245 watts of power for exceptional sound delivery.
- **Standard XM Radio**: Over **170 channels** let you customize your listening experience (with 3-month "no charge" trial).
- **Standard OnStar®**: One-year **Safe & Sound** plan (LS, 1SS) delivers security and peace of mind, plus a Directions & Connections plan with **Turn-by-Turn Navigation** (LT, 2SS) – the simplest and smartest system available at a push of a button.

- **Comprehensive standard safety**: With a strong body structure, six air bags, StabiliTrak® and OnStar®, Camaro provides safety **before, during and after a collision**.

EXHILARATING PERFORMANCE

- **Two advanced engines** deliver power, performance and efficiency:
 - **LS and LT**: 3.6L Direct Injection V6 engine with Variable Valve Timing.
 - ♦ **304 hp with 29 hwy/18 city mpg** (automatic) .
 - ♦ **304 hp with 29 hwy/17 city mpg**(manual) .
 - ♦ **273 lb.-ft. of torque**.
 - ♦ Same premium award-winning engine as Cadillac CTS.
 - **SS**: 6.2L V8 engine.
 - ♦ **400 hp with 25 hwy/16 city mpg** (automatic, with Active Fuel Management) with 410 lb.-ft. of torque.
 - ♦ **426 hp with 24 hwy/16 city mpg** (manual) with 420 lb.-ft. of torque.
- **Transmissions: 6-speed manual transmission** is standard for the purist; **Hydra-Matic 6-speed automatic transmission with TAPshift®** lets you shift like a clutchless manual for power when you need it.
- **Sport and Performance suspensions**: The FE2 Sport suspension (V6) and the FE3 Performance suspension (V8) deliver **sharp, performance-oriented handling** and a smooth, controlled ride.
- **Independent rear suspension**: Each rear wheel reacts independently to changing road conditions for a **smooth ride and responsive handling**.
- **StabiliTrak® with Traction Control**: Up to four modes let you select the level of stability and traction control you need to **handle any driving condition**.
- **Limited-slip rear differential**: Helps **improve traction** by directing engine power to the rear wheel with the best traction (SS).
- **Brembo® brakes**: Standard on the V8 (SS) for **exceptional braking** and superior fade resistance and pedal feel.

» PASSIONATE DRIVERS

The 2010 Camaro is much more than a muscle car. It has great looks and excellent performance that appeals to performance enthusiasts, but it also has sophisticated engineering and technology that attracts customers who typically shop for import sports coupes.

In the past, the focus would have been on enthusiast customers only, but in this changed market a broader target market can be reached. With that in mind, we have identified two groups of Camaro buyers.

Enthusiasts

- **Know the history of Camaro** and want to be a part of the Camaro legacy.
- **Knowledgeable** about cars, performance and mechanics and may have followed Camaro's development through enthusiast magazines and automotive web sites.
- Have a **passion for performance** and look to their car to reinforce their emotional attachment.
- **Not everyone in this group is middle age or older.** Research indicates there is a large group of males under the age of 30 who know about Camaro history and want to be a part of the next generation Camaro.
- Will be first in line to buy a Camaro, most likely a **V8** model.



Non-Enthusiasts

- **New buyers to Chevy** – initially attracted by Camaro's design. Referencing the history of Camaro may actually be a negative for them.
- Want **21st century design, technology and style** that the 2010 Camaro brings to the table.
- Unlike enthusiasts, they are attracted not to what's under the hood, but to **how the car looks and makes them feel**.
- They are **out to impress**, and Camaro is their declaration to the world that there is more to them than meets the eye.
- For them, Camaro's performance is all about the **joy of the drive**, rather than the technical specifications.
- Will likely be interested in a **V6** model, with its combination of performance and outstanding fuel economy.



Be sure to listen to these customers and ask questions to determine what type of customer they are. Then highlight the Camaro features that most appeal to their needs.





For generations of people, the Chevrolet Camaro instantly brings an image to mind. They can visualize the car and they definitely know it when they see it.

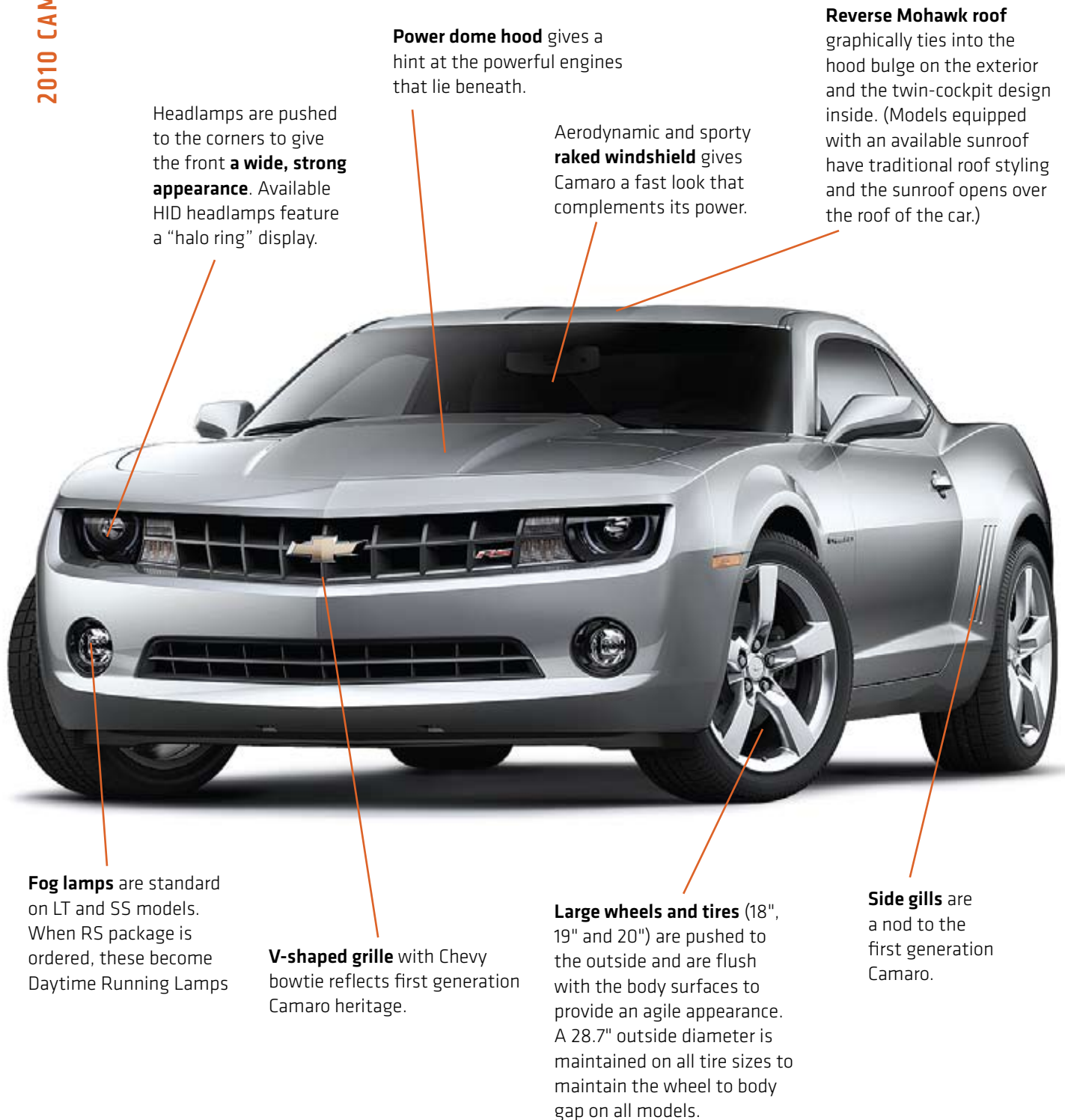
The 2010 Camaro lives up to the expectations of these customers and is easily identified as the latest addition to the Camaro nameplate.

As a bonus, the new Camaro not only appeals to the enthusiast customer; its sleek and technical design attracts a whole new type of customer—customers who crave the Camaro's look and are impressed by the advanced technology that Camaro offers.

Camaro features a traditional long dash-to-axle length, a short front overhang, a longer length rear overhang and a low roof line. All of these features ensure a classic form and shape that's expressive with forward-motion proportions.

An available **RS Package** adds a unique look with 20-inch Midnight Silver-painted aluminum wheels, HID lamps with halo ring, RS-specific tail lamps, body-color roof ditch molding & spoiler (when ordered on LT).

Turn the page to take a closer look at notable elements of the Camaro design.



Headlamps are pushed to the corners to give the front **a wide, strong appearance**. Available HID headlamps feature a “halo ring” display.

Power dome hood gives a hint at the powerful engines that lie beneath.

Aerodynamic and sporty **raked windshield** gives Camaro a fast look that complements its power.

Reverse Mohawk roof graphically ties into the hood bulge on the exterior and the twin-cockpit design inside. (Models equipped with an available sunroof have traditional roof styling and the sunroof opens over the roof of the car.)

Fog lamps are standard on LT and SS models. When RS package is ordered, these become Daytime Running Lamps

V-shaped grille with Chevy bowtie reflects first generation Camaro heritage.

Large wheels and tires (18", 19" and 20") are pushed to the outside and are flush with the body surfaces to provide an agile appearance. A 28.7" outside diameter is maintained on all tire sizes to maintain the wheel to body gap on all models.

Side gills are a nod to the first generation Camaro.

» Exterior Colors

- Silver Ice Metallic
- Imperial Blue Metallic
- Black
- Aqua Blue Metallic
- Cyber Gray Metallic
- Victory Red
- Rally Yellow
- Inferno Orange Metallic
- Red Jewel Tintcoat (LT, SS)
(Premium color – additional charge)
- Summit White (interim availability)

Twin tail lamp design carries the aggressive styling to the rear of the vehicle. Models equipped with the RS Package feature a unique, darker lens appearance.

LED CHMSL is located on the package shelf at the base of the rear glass.



Fender shapes are **bold and pronounced**. Rear fenders feature a strong shoulder.

Single-piece bodyside stamping provides exceptional fit and consistent gaps.

Trunk provides 11.3 cu. ft. of **cargo** space.

All models feature **large, round dual polished exhaust tips** (3" diameter on V6 models; 3-3/4" diameter on V8 models).



The interior of the Camaro is a blend of form and functionality with superb fit-and-finish. It captures the timeless spirit and feeling of great Camaros from the past, while adding contemporary details.

- Sport front bucket seats are included on all models. A 6-way power driver seat is standard on LT and SS models. Heated leather appointed front seats are included on 2LT and 2SS models.
- Standard manual tilt and telescoping steering wheel.
- Driver-oriented instrument cluster positions the gauges for easy viewing. A Driver Information Center is located between the tachometer and speedometer.
- A four-pack gauge cluster, reminiscent of the 1969 Camaro, is located on the center console under the radio. The gauges are standard on 2LT and 2SS models and are also available as an accessory. Displays include oil temperature, oil pressure, transmission fluid temperature and battery voltage.
- “Deep dish” three-spoke steering wheel is a heritage design feature.
- Radio and HVAC systems feature oversized control knobs with soft rubber for easy gripping.





» Camaro LT vs. Nissan 370Z

Point

The new 370Z offers new styling with a more aggressive appearance.

Counterpoint

While the 370Z does have a freshened appearance, the casual observer may have a hard time noting the differences from the previous model. Regardless, the appearance of both the old 350Z and new 370Z models appeals mostly to sports car buyers. Camaro, on the other hand, has an all-new design that appeals to a wide range of customers by combining the classic details from the first generation Camaro with 21st century updates.



» Camaro LT vs. Mitsubishi Eclipse GT

Point

Eclipse's "attainable exotic" styling is like nothing else on the road.

Counterpoint

Although the Eclipse does have a bold design, it may be polarizing for many customers. Camaro's clean lines and powerful shape are not ostentatious and attract a wide range of customers.



» Camaro SS vs. Ford Mustang GT

Point

The 2010 Mustang is modernized with more refinement and a new look inside and out.

Counterpoint

While people have been referring to the 2010 Mustang as all-new, it's actually a refresh of the existing model. Sure, there is new sheet metal and there are new features of minimal value, such as a sequential blinking tail lamps, but most of the mechanicals are left alone. In the end, Mustang still ends up looking like a retromobile. Camaro, on the other hand, has a sleek, modern and technical look that appeals to a wide range of people, from enthusiasts to image-conscious.



» Camaro SS vs. Dodge Challenger R/T

Point

Challenger is the muscle car for the 21st century.

Counterpoint

Not exactly. The current Dodge Challenger is more like a copy of a 20th century muscle car, the 1970 Dodge Challenger. Both the current and previous Challenger look remarkably alike. Camaro, on the other hand, is a true 21st century sports car. It takes the classic styling cues of the first generation Camaro and updates the look for a whole new generation of performance vehicle enthusiasts.

Just as Camaro's looks have evolved for the 21st century, its performance is also dramatically improved. Take a look at all of the features that go into Camaro that help deliver an unforgettable driving experience.

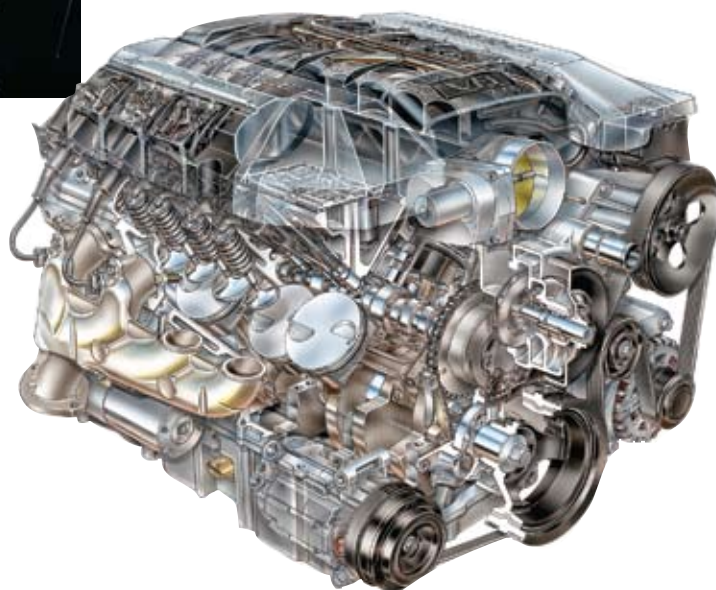
Engines

Both Camaro engines are constructed of cast aluminum with cast-in-place iron bore liners.

- An award winning **3.6-liter Direct Injection V6** engine with **Variable Valve Timing** is standard on LS and LT models. It includes an aggressive throttle map for more responsive launch feel, variable intake manifolds for increased power and torque and direct injection to help the engine extract more power from less fuel with fewer emissions.
 - 304 hp @ 6400 rpm
 - 273 lb.-ft. of torque @ 5200 rpm
 - 0-60 mph: 6.1 seconds
 - Regular unleaded fuel



- A **6.2-liter V8 engine** powers SS models. There are two versions available. Automatic-equipped V8 models also have **Active Fuel Management™** to help improve fuel economy. Both versions run on regular unleaded gas. Premium is recommended for increased performance.
 - Manual transmission
 - ◆ 426 hp @ 5900 rpm
 - ◆ 420 lb.-ft. of torque @ 4600 rpm
 - ◆ 0-60 mph: 4.7 seconds
 - Automatic transmission
 - ◆ 400 hp @ 5900 rpm
 - ◆ 410 lb.-ft. of torque @ 4300 rpm
 - ◆ 0-60 mph: 4.7 seconds



» Transmissions

• V6 models

- Standard **AISIN® 6-speed manual** transmission. It delivers low shift efforts, short throws and enhanced “fun-to-drive” characteristics.
- Available **Hydra-Matic 6L50 6-speed automatic** transmission includes Driver Shift Control, or TAPshift, allowing the transmission to be shifted like a clutchless manual for a more interactive driving experience. TAPshift controls are located on the steering wheel.



AISIN® 6-speed manual



Hydra-Matic 6L50 6-speed automatic

» Transmissions

• V8 models

- Standard **Tremec® TR6060 6-speed manual** transmission. Offers similar characteristics of the V6 manual transmission but is enhanced with several features to handle the additional torque of the V8 engine.
- Available **Hydra-Matic 6L80 6-speed automatic** transmission. Includes Driver Shift Control, or TAPshift and Performance Algorithm Shifting (PAS). PAS lets the electronic transmission controller override the automatic gear selection during closed throttle high lateral acceleration maneuvers, rapidly downshifting with nearly synchronous engine speed matching for quick power up when the throttle is reopened.



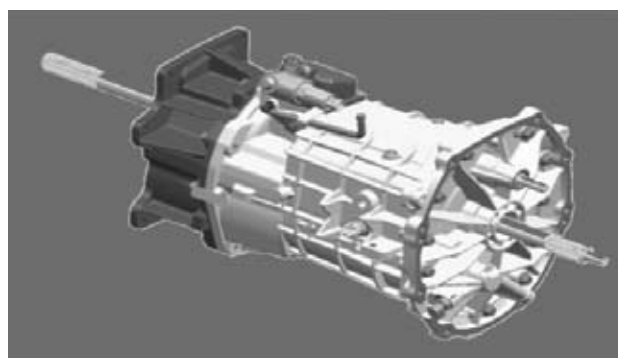
» Limited-Slip Differential

- Standard on V8 models and on V6 manual models, a limited-slip differential helps to improve traction by directing engine power to the rear wheel with the best traction. This gets the power to the ground for enhanced performance, especially in low-speed corners and low-traction conditions.

» Fuel Economy

Camaro's exceptional performance does not result in a penalty at the fuel pump.

- V6 fuel economy
 - **Automatic: 29 hwy/18 city mpg**
 - **Manual: 29 hwy/17 city mpg**
- V8 fuel economy
 - **Automatic: 25 hwy/16 city mpg**
 - **Manual: 24 hwy/16 city mpg**



Tremec® TR6060 6-speed manual



Hydra-Matic 6L80 6-speed automatic

Superb handling begins with the vehicle structure itself, and Camaro has an excellent foundation consisting of a stiff unibody with near 50/50 front-to-rear weight distribution. In addition, Camaro's long wheelbase contributes to a smooth ride, while its wide track helps with overall stability.

› Suspensions

Camaro's **four-wheel independent suspension** system has an excellent balance between a smooth, controlled ride and sharp, responsive handling. V6 models have the FE2 Sport-tuned suspension, and V8 models have the FE3 Performance-tuned suspension.



• Front suspension

- Double-ball-joint design
- Direct-acting stabilizer bar
- Forward-mounted steering rack and dual lower links with individual ball joints at the outer end, which creates a virtual pivot arrangement
- Provides excellent road connection, better on-center steering feel, sharper handling and improved directional stability



• Rear suspension

- 4.5-link design
- Decoupled stabilizer bar
- High lateral stiffness for sharper, performance-oriented handling
- Elastic bushings for a more compliant ride
- Rubber-isolated subframe helps filter out drivetrain and road vibrations

› Steering

Camaro features a precision **hydraulic power rack-and-pinion** steering system with a variable ratio gear. There are 2.5 turns from lock-to-lock. The rack is forward-mounted of the front axle for precise steering characteristics with light steering effort and excellent road feel.

› Braking Systems

Bringing Camaro to a stop are standard **four-wheel vented disc antilock brakes** with Electronic Brake Assist. These brakes provide good brake pedal feel, increased fade resistance and decreased noise and vibration. SS models have standard **4-piston Brembo® brakes** and aluminum fixed head calipers. SS brake linings are high performance, semi-metallic for superior fade resistance and pedal feel.



Brake Rotor Comparison

	LS/LT	SS
Front rotors	12.6"	14.0"
Rear rotors	12.4"	14.4"

» Chassis Control Systems

In addition to ABS, all Camaro models include **full-function traction control and StabiliTrak**. StabiliTrak is a sophisticated four-channel active handling system that links the vehicle's dynamic control systems to assist the driver in maintaining control under demanding or adverse road conditions and evasive maneuvers.

Camaro's StabiliTrak system allows the driver to choose one of **four modes**:

- Stability Control On (factory default/recommended setting)
- Traction Control Off/Stability Control On
- Competitive/Sport Mode (SS)
- Traction Control and Stability Control Off

Competitive/Sport Mode. The StabiliTrak system on Camaro SS models is equipped with a Competitive/Sport mode, which features optimized tuning specific to track conditions. It allows for more enthusiastic driving without unnecessary intervention from the system, such as when driving on a race track. In this mode, stability control will only engage in situations of extreme oversteer or extreme acceleration.

Launch Control. SS models equipped with a manual transmission also include a Launch Control feature that is enabled when Competitive/Sport Mode is active. Launch Control is designed to control wheel slip to an optimum level, allowing the driver to consistently launch the vehicle to achieve maximum acceleration. Launch Control automatically holds optimum launch rpm so the driver can release the clutch pedal with a wide open throttle without excessive wheel spin or damage to the drivetrain.





18" Heritage Steel Wheel (LS)



18" Painted Aluminum Wheel (1LT)



19" Painted Aluminum Wheel (2LT)

» Wheels/Tires

There are several wheel and tire combinations available for Camaro. In each application, the diameter of the tires is maintained so any wheel/tire size selection fills the wheel wells the same.

- **18" heritage steel wheels** with P245/55R18 all-season touring tires (standard on LS)
- **18" painted aluminum wheels** with P245/55R18 all-season touring tires (standard on 1LT)
- **19" painted aluminum wheels** with P245/50R19 all-season touring tires (standard on 2LT)
- **19" polished aluminum wheels** with P245/50R19 all-season touring tires (available on LT)
- **20" x 8" front and 20" x 9" rear flangeless painted aluminum** with sterling silver finish and P245/45ZR20 front and P275/40ZR20 summer tires (standard on SS; available on LT)
 - On LT models, these wheels are only available with the RS Package and finish changes to Midnight Silver
 - On SS models also equipped with the RS Package, the finish changes to Midnight Silver
- **20" x 8" front and 20" x 9" rear polished aluminum wheels** with P245/45R20 front and P275/40R20 summer tires (available on all SS and LT with RS Package)



19" Polished Aluminum Wheel (Optional LT wheel)



20" Painted Aluminum Wheel with Sterling Silver finish (SS)



20" Painted Aluminum Wheel with Midnight Silver finish (RS Package)



20" polished aluminum wheel (Optional on all SS and LT with RS Package)

» Camaro LT vs. Nissan 370Z

Point

With the all-new 370Z, engineers focused on enhancing overall performance.



Counterpoint

Performance is a top priority for Camaro engineers, as well. In fact, both Camaro and 370Z have similar output for their V6 engines, however, Camaro returns 3 mpg more highway fuel economy. In addition, both Camaro and 370Z have similar suspension, braking and steering systems, and both vehicles include standard stability control. Both include standard 18-inch wheels and tires, but Camaro offers available 19-inch and 20-inch wheels. 370Z only offers optional 19-inch wheels. Plus, for maximum performance, Camaro SS models include a standard V8 engine; a V8 engine is not available on any 370Z.

» Camaro LT vs. Mitsubishi Eclipse GT

Point

The Eclipse is a dedicated sports car that has the performance to back it up.



Counterpoint

Camaro is also a superb sports car that offers solid performance. Camaro's 3.6L V6 is smaller than Eclipse's 3.8L V6, but Camaro's delivers more power. Plus, Camaro is offered with a V8; Eclipse offers a four-cylinder and a V6. In addition, Camaro is available with a 6-speed automatic, while Eclipse only offers an available 5-speed automatic transmission. Looking at V6 engine mileage, Camaro has a significant 5 mpg highway advantage with its automatic and 4 mpg with its manual.

Camaro's steering system includes a variable ratio feature; Eclipse's steering system does not. And both vehicles come standard with 18-inch wheels, but Camaro offers the option of 19-inch and 20-inch wheels, as well. Eclipse does not offer optional wheels.

» Camaro SS vs. Ford Mustang GT

Point

The new Mustang includes several improvements designed to enhance performance.



Counterpoint

The new Mustang does have some performance improvements, but they are modest at best. Mustang still uses a live rear axle suspension that does not compare to Camaro's independent rear suspension. Looking at engines, Mustang's 4.0L V6 engine offers 94 less hp than Camaro's smaller and more efficient V6. Comparing V8 engines, Mustang's 4.6L output is 315 hp, only 11 more than our V6, but that is around 100 hp less than Camaro's 6.2L V8. And Camaro's V8 fuel economy bests Mustang by 1 mpg in the city and up to 3 mpg on the highway. As for transmissions, Camaro utilizes 6-speed units while Mustang has only 5-speed units.

Camaro SS includes 20-inch wheels and tires. Mustang has standard 18-inch wheels and offers 19-inch wheels as an option. Looking at braking systems, Mustang offers nothing comparable to Camaro's standard four-piston Brembo calipers.

» Camaro SS vs. Dodge Challenger R/T

Point

Challenger offers true muscle car performance.



Counterpoint

Camaro also offers true muscle car performance; but unlike muscle cars, Camaro likes challenging roads just as much as straight line acceleration. First, the 6.2L V8 on Camaro SS puts out more horsepower than Challenger's 5.7L V8 engine. In addition, Camaro's automatic transmission is a 6-speed, while Challenger's automatic transmission is only a 5-speed.

Camaro SS has standard 20-inch wheels. Challenger R/T comes standard with 18-inch wheels; 20-inch wheels are only available as an option. Finally, Camaro SS features Brembo brakes, a feature not offered on Challenger R/T.



Camaro is packed with several technologically advanced features that help enhance the overall appeal of the vehicle for both the driver and passengers.

» Audio System

- AM/FM stereo with CD/MP3 playback
- XM Radio (with 3-month trial)
- Music navigator
- Graphic Information Display (GID)
- Auxiliary audio input jack (located in center console)
- Outside temperature display
- Six-speakers (LS, 1LT, 1SS)
- Premium nine-speaker Boston Acoustics® system with 245-watt amplifier
 - Standard on 2LT, 2SS
 - Available on 1LT, 1SS

» Convenience/Connectivity Features

- **Steering wheel-mounted audio system controls**
 - Standard on 2LT, 2SS
 - Available on 1LT as part of the Convenience and Connectivity Package
- **Preferred Device Interface Module (PDIM)**
 - Allows wireless connection (and song selection) of electronic devices using steering wheel audio controls
 - Standard on 2LT, 2SS
 - Available on 1LT as part of the Convenience and Connectivity Package
- **Bluetooth for phone**
 - Allows wireless connection of personal cell phones to the vehicle's audio system
 - Standard on 2LT, 2SS
 - Available on 1LT as part of the Convenience and Connectivity Package
- **USB port (located in center console)**
 - Allows playback of music from a portable USB device
 - Standard on 2LT, 2SS
 - Available on 1LT as part of the Convenience and Connectivity Package





» Driver Information Center (DIC)

Camaro's DIC offers several useful and unique functions such as vehicle and trip information as well as warnings and messages. Information is displayed on a 2.5" x 2" screen located in the center portion of the instrument cluster. Camaro DIC displays include:

• Vehicle Information Menu

- Oil Life
- Tire Pressure
- Toggle between standard or metric display units

• Trip Information Menu

- Two trip odometers
- Fuel range
- Average fuel economy
- Average speed



• Warnings and Messages

- StabiliTrak mode
- Light control on/off
- Ice possible, drive with care
- Door, hood or trunk open
- Remote Keyless Entry battery and learning functions
- Cruise set to (selected mph)
- Fuel and windshield washer
- Charging system and engine warnings

• Compass

• OnStar® Turn-by-Turn directions

» Remote Vehicle Starter System

- Available on 1LT, 2LT and 2SS models equipped with an automatic transmission. 1LT models also require Convenience and Connectivity Package
- Climate controls revert to last known settings
- When outside air temperature is low enough, available heated seats are activated
- Factory-installed to ensure compatibility with the vehicle's anti-theft system



» OnStar

- Camaro LS and 1SS models feature **standard OnStar with one year of the Safe & Sound** plan. In addition to convenient **Hands-Free Calling**, a new OnStar feature available on SS is **Stolen Vehicle Slowdown**, which allows law enforcement to send a request to OnStar to slow the vehicle down gradually and safely once a clear line of sight to the stolen vehicle is established. Other OnStar functions include:
 - Automatic Crash Response
 - Stolen Vehicle Location Assistance
 - Emergency Services
 - Roadside Assistance
 - Remote Door Unlock
 - OnStar Vehicle Diagnostics
 - Accident Assist
 - Remote Horn and Lights
- Camaro LT and 2SS models include **OnStar with one year of the Directions & Connections** plan. It includes all of the functionality of the Safe & Sound plan and adds:
 - Turn-by-Turn Navigation
 - Driving Directions
 - Ride Assist
 - Information/Convenience Services



» Camaro LT vs. Nissan 370Z

Point

The Nissan 370Z is a vehicle known for its technical nature and features.



Counterpoint

The 370Z may offer technology features, but most are only included on the top trim level. Camaro offers standard features such as a CD/MP3 player, satellite radio and optional features including a premium audio system, Bluetooth, wireless PDIM (Preferred Device Interface Module), a USB port and a compass. On 370Z, some of these features are available with the top trim level, but features like an upgraded sound system and Bluetooth are not offered in the base model. In addition, Camaro LT models include OnStar Directions & Connections with Turn-By-Turn Navigation. On 370Z, an in-dash navigation system is only offered as an option on the top trim level. In the end, it's Camaro that offers the most technology.

» Camaro LT vs. Mitsubishi Eclipse GT

Point

The Eclipse is packed full of technology designed to enhance the overall driving experience.



Counterpoint

If Eclipse's technology is defined by loud stereo with a big subwoofer, then it is packed. However, Camaro offers technologically advanced features such as a PDIM (Preferred Device Interface Module), Bluetooth, a USB port, a Driver Information Center and Remote Vehicle Starter System. Camaro LT also comes standard with OnStar Directions & Connections with Turn-By-Turn Navigation. Eclipse offers none of these features, even as options.

» Camaro SS vs. Ford Mustang GT

Point

Mustang is available with Ford SYNC, one of the most advanced fully integrated communications and entertainment systems available.



Counterpoint

True, the Mustang offers Ford SYNC, which allows voice-activated operation of the audio system and portable digital media devices, but in order to get that feature, customers must step up to the Premium trim level. Camaro offers similar capabilities for portable music devices with a standard auxiliary audio input jack and available features like Bluetooth, wireless PDIM and a USB port. Furthermore, Camaro offers additional technologies such as standard satellite radio, a Driver Information Center, OnStar and an available Remote Vehicle Starter System. On Mustang, satellite radio requires the Premium trim level and the rest of the features are not offered.

» Camaro SS vs. Dodge Challenger R/T

Point

The Challenger offers customers a full range of innovative technologies.



Counterpoint

True, Challenger does offer several innovative technologies, but nearly all of them are extra-cost options. Camaro SS models include or are available with features such as a Driver Information Center, steering wheel-mounted controls for cruise and audio, satellite radio, a premium audio system, Bluetooth, an auto-dimming rearview mirror, compass display, Universal Home Remote and automatic headlamp control. All of these features are only available as options on Challenger. In addition, Camaro includes other features like wireless PDIM, a USB port, an Oil Life System and OnStar. These features are not offered on Challenger at any price.



In addition to providing outstanding performance and impressive good looks, the 2010 Camaro also features **exceptional quality** and features designed to help reduce ownership costs over the life of the vehicle.

Camaro's exterior features **world-class fit-and-finish** with excellent build quality and tight gaps. A **one-piece bodyside stamping** contributes greatly to its overall chiseled, billet-like appearance and allows a clean overall side surface area free of seams, gaps or cladding.



Camaro's **refined interior** includes careful attention to detail with high-quality materials and superb build quality.

Extensive NVH reduction measures and powertrain refinements contribute to an extremely **quiet interior**.



An **Oil Life Monitor** is standard on all Camaros. This feature monitors a number of engine operating variables and alerts the driver when an oil change is needed. This is a much more environmentally friendly and economically sound approach to maintenance.



» Warranty

Chevrolet backs up Camaro's outstanding quality with impressive and **comprehensive warranty** coverage that no other full-line automaker's protection can touch.

Warranty	Duration
Bumper-to-Bumper Warranty	3-years/36,000 miles
Powertrain Warranty	5-years/100,000 miles <ul style="list-style-type: none"> – Roadside Assistance – Courtesy Transportation – Transferable
Corrosion Warranty	6-years/100,000 miles

» Camaro LT vs. Nissan 370Z

Point

According to Nissan: "The new Z has enhanced quality—both in fit-and-finish and in the quality of materials and designs."



Counterpoint

The new Camaro has outstanding quality, as well. In addition to excellent fit-and-finish and top-quality materials, Camaro also includes extras, such as an Oil Life Monitor that determines the best time for an oil change. 370Z does not offer similar technology. Furthermore, when looking at warranty coverage, both vehicles provide 3-year or 36,000-mile bumper-to-bumper warranties, but Camaro's powertrain warranty is good for an additional 40,000 miles compared to 370Z. Camaro also includes standard roadside assistance and courtesy transportation. With 370Z, roadside assistance is optional and courtesy transportation is not included.

» Camaro LT vs. Mitsubishi Eclipse GT

Point

Mitsubishi backs up the Eclipse with one of the best warranties in the industry.



Counterpoint

"One of the best" is an accurate description, since Camaro's warranty offers better overall coverage. Mitsubishi does offer longer durations for their new vehicle, powertrain and corrosion warranties, but the lengthy powertrain warranty only applies to the original owner. Mitsubishi also does not offer courtesy transportation; courtesy transportation is a standard part of all Chevrolet powertrain warranties.

» Camaro SS vs. Ford Mustang GT

Point

The new Mustang marks new levels for refinement and quality.



Counterpoint

While the 2010 Mustang is improved over the model it replaces, it's still far from what Camaro offers. Both Mustang and Camaro include 3-year or 36,000-mile bumper-to-bumper warranties, but Camaro offers a longer duration than Mustang for the powertrain and corrosion warranties. In addition, Camaro's roadside assistance coverage lasts 40,000 miles longer than Mustang's. And Camaro's powertrain warranty includes courtesy transportation, a feature not offered with Mustang's warranty.

» Camaro SS vs. Dodge Challenger R/T

Point

Challenger includes a lifetime powertrain warranty. No one else can match that.



Counterpoint

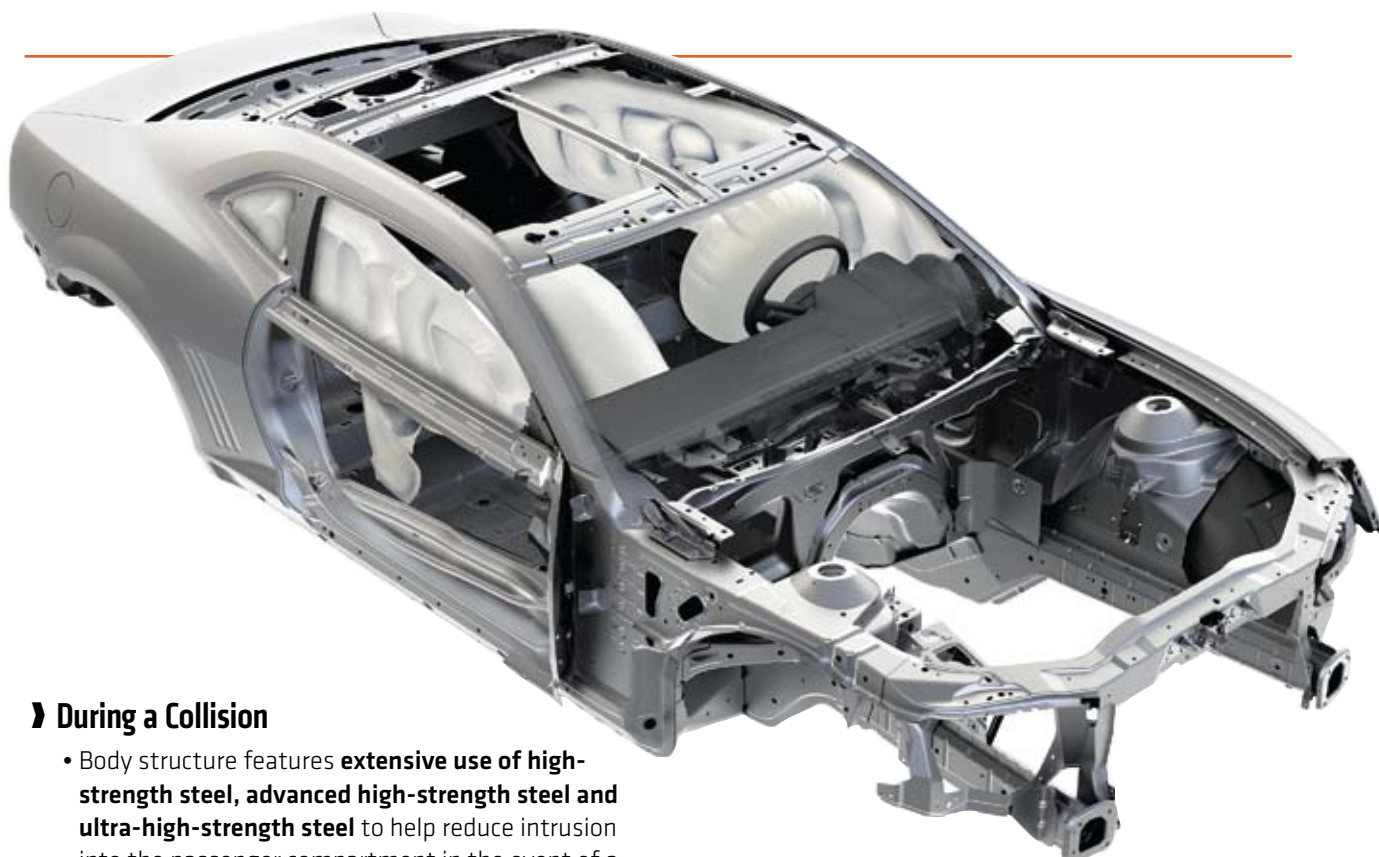
True, Challenger does include a lifetime powertrain warranty, but it only applies to the original owner and a dealer-inspection is required every five years. Camaro's 5-year, 100,000-mile warranty is transferable to subsequent owners. Camaro also includes a longer duration for the corrosion warranty and includes roadside assistance and courtesy transportation for 5 years or 100,000 miles. Challenger's roadside assistance duration is only 3 years or 36,000 miles and courtesy transportation is not offered.

Many vehicle shoppers cite safety as one of their top concerns when shopping for a vehicle, and Camaro customers are no exception. Camaro includes many features designed to help protect the vehicle's occupants before, during and after a collision. Let's take a closer look:

» Before a Collision (Accident Avoidance)

- **Wide track, low center of gravity and responsive steering and suspension systems** help drivers maintain control of the vehicle and avoid a collision
- **Daytime Running Lamps** help make Camaro more visible to other drivers and pedestrians
- **Four-wheel ABS** prevents wheel lock-up during hard braking to help drivers maintain steering ability and minimize braking distances
- **Brake Assist** senses emergency braking by detecting the speed or force the driver applies to the brake pedal and boosts the power as needed. Under certain conditions, the brake assist may activate the ABS more quickly and easily than vehicles without the feature
- **StabiliTrak electronic stability control system** continuously monitors key operating dynamics of the vehicle and uses ABS and traction control to correct oversteer and understeer conditions and keep the vehicle traveling on the intended path
- **Tire Pressure Monitoring System** ensures proper tire inflation to help reduce the chance of tire failure due to incorrect tire pressures





» During a Collision

- Body structure features **extensive use of high-strength steel, advanced high-strength steel and ultra-high-strength steel** to help reduce intrusion into the passenger compartment in the event of a collision. Numerous reinforcements are also found throughout the body structure
- **Three-point safety belts** are located at all seating positions. Driver and front passenger safety belts also include **pretensioners and load-limiters**
- **Rear seat LATCH attachments** provide a secure mounting point for compatible child safety seats
- **Air bags**
 - **Dual-stage frontal air bags** can deploy at one of two different rates depending on the severity of the collision. A **Passenger Sensing System** determines the weight and position of the front seat passenger and decides whether or not to inflate the air bag and at what force
 - Seat-mounted **side-impact air bags** for front seat occupants help provide additional chest protection
 - **Head-curtain side-impact air bags** provide head protection to occupants in both the front and rear seats



» After a Collision

- OnStar's Automatic Crash Response system makes crash data available to emergency services so they can deploy the correct type of equipment and personnel to the crash scene more quickly



» Camaro LT vs. Nissan 370Z

Point

The 370Z features a long list of standard safety features.



Counterpoint

Most vehicles today have similar sets of safety features, and Camaro matches 370Z feature for feature. However, Camaro does include OnStar as standard equipment. OnStar has the ability to automatically connect to emergency services in the event of a collision and relay information about the type of crash so emergency responders can be prepared with the proper equipment. 370Z does not offer a feature similar to OnStar.

» Camaro LT vs. Mitsubishi Eclipse GT

Point

Eclipse has a full range of safety equipment to help protect all occupants of the vehicle.



Counterpoint

Camaro and Eclipse do share several standard safety features such as ABS, stability control and several air bags, but one standard Camaro feature is not available on any Eclipse: OnStar. OnStar can automatically contact emergency services in the event of a collision for the ultimate peace-of-mind. Eclipse has nothing comparable.

» Camaro SS vs. Ford Mustang GT

Point

Mustang is fully equipped for outstanding occupant protection, pre- and post-collision.



Counterpoint

The new Ford Mustang does have an impressive list of safety features, right down to a new system called 911 Assist, which operates similar to OnStar. However, unlike OnStar, 911 Assist relies on the driver's cell phone to make a connection to emergency services. With OnStar, cellular phone technology is integrated with the vehicle. 911 Assist also does not include a feature similar to OnStar's Stolen Vehicle Location Assistance. Plus, 911 Assist is only included on the Premium trim level. OnStar is standard equipment on every Camaro. Furthermore, side-curtain air bags are not offered on Mustang. Side-curtain air bags are standard on all Camaro models.

» Camaro SS vs. Dodge Challenger R/T

Point

The Dodge Challenger offers more than 25 safety and security features.



Counterpoint

Camaro's safety and security feature list looks very similar to Challenger's. However, Camaro includes seat-mounted side-impact air bags and OnStar. Both of these important safety features cannot be found on any Challenger model.

	LS 1LS	LT 1LT	2LT	SS 1SS	2SS
POWERTRAIN					
3.6L DI VVT V6 (LLT)	S	S	S	-	-
6.2L V8 (LS3) (req. 6-speed man. trans.)	-	-	-	S	S
6.2L V8 with Active Fuel Management (L99) (req. 6-speed auto. trans.)	-	-	-	A	A
3.27 rear axle ratio (req. 6-speed auto. trans. on SS)	S	S	S	A	A
3.45 rear axle ratio	-	-	-	S	S
Limited-slip rear differential (req. 6-speed man. trans. on LS/LT)	A	A	A	S	S
AISIN® 6-speed manual	S	S	S	-	-
Tremec® 6-speed manual	-	-	-	S	S
6L50 Hydra-Matic 6-speed automatic	A	A	A	-	-
6L80 Hydra-Matic 6-speed automatic	-	-	-	A	A
TAPshift manual shift controls (automatic transmission)	A	A	A	A	A
STEERING AND SUSPENSION					
Rack-and-pinion power steering, variable ratio	S	S	S	S	S
Independent double-ball joint front suspension	S	S	S	S	S
Independent 4.5-link rear suspension	S	S	S	S	S
FE2 Sport-tuned suspension	S	S	S	-	-
FE3 Performance-tuned suspension	-	-	-	S	S
SEATS AND TRIM					
Front sport bucket seats (LT/SS include passenger-side seatback map pocket)	S	S	S	S	S
4-way manual driver seat with power recliner	S	-	-	-	-
6-way power driver seat with power recliner	-	S	S	S	S
2-way manual front passenger seat with power recliner	S	S	S	S	S
Leather-appointed front seats	-	-	S	-	S
Heated driver and front passenger seats	-	-	S	-	S
Folding rear seat with large pass through to trunk	S	S	S	S	S
COMFORT AND CONVENIENCE					
Single-zone manual air conditioning with pollen filter	S	S	S	S	S
Bluetooth for phone (included and only available with Convenience and Connectivity Package on 1LT)	-	A	S	-	S
Compass (located in Driver Information Center)	S	S	S	S	S
Cruise control (includes steering wheel-mounted switches)	S	S	S	S	S
Door locks, power with lockout protection	S	S	S	S	S
4 auxiliary console-mounted gauges	-	-	S	-	S
Interior rearview mirror, auto-dimming	-	-	S	-	S
Remote vehicle starter system (req. 6-speed auto. trans.) (included and only available with Convenience and Connectivity Package on 1LT)	-	A	S	-	S
Shift knob, urethane	S	S	-	-	-
Shift knob, leather-wrapped (included and only available with Convenience and Connectivity Package on 1LT)	-	A	S	S	S
Steering column, manual tilt and telescopic	S	S	S	S	S
Steering wheel, 3-spoke urethane	S	S	-	-	-
Steering wheel, 3-spoke leather-wrapped (included and only available with Convenience and Connectivity Package on 1LT)	-	A	S	S	S
Sunroof, power	-	A	A	A	A
Universal Home Remote	-	-	S	-	S
Windows, power with Express-Up/Down	S	S	S	S	S

	LS 1LS	LT 1LT	2LT	1SS	SS 2SS
AUDIO AND ENTERTAINMENT SYSTEMS					
AM/FM/CD/MP3 with music navigator, Graphic Information Display, auxiliary input jack, outside temperature display	S	S	S	S	S
6-speaker sound system	S	S	-	S	-
9-speaker premium Boston Acoustics® sound system with 245-watt amplifier	-	A	S	A	S
Wireless PDIM (included and only available with Convenience and Connectivity Package on 1LT)	-	A	S	-	S
USB port (included and only available with Convenience and Connectivity Package on 1LT)	-	A	S	-	S
XM Radio (incl. 3-trial months of service)	S	S	S	S	S
Steering wheel-mounted audio controls (included and only available with Convenience and Connectivity Package on 1LT)	-	A	S	-	S
SAFETY AND SECURITY					
6 air bags, dual-stage frontal*, side-impact for driver and front passenger, head-curtain side-impact for front and rear seating positions (*incl. Passenger Sensing System)	S	S	S	S	S
Safety belt pretensioners, driver and front passenger	S	S	S	S	S
LATCH system	S	S	S	S	S
OnStar (incl. 1-year subscription to Safe & Sound plan)	S	-	-	S	-
OnStar (incl. 1-year subscription to Directions & Connections plan)	-	S	S	-	S
Theft-deterrent system, PASS-Key III	S	S	S	S	S
Tire Pressure Monitoring System	S	S	S	S	S
Brakes, 4-wheel w/ antilock, Brake Assist (Single piston on LS/LT, Brembo performance 4-piston on SS)	S	S	S	S	S
StabiliTrak with traction control (SS models incl. Competitive/Sport Mode and manual trans. SS models include Launch Control)	S	S	S	S	S
EXTERIOR FEATURES					
Exhaust tips - 3"	S	S	S	-	-
Exhaust tips - 3-3/4"	-	-	-	S	S
Fascias, front and rear body-color with front grille and rear diffuser	S	S	S	-	-
Fascias, front and rear body-color, SS-specific with unique front grille and rear diffuser, lower extension, and front air scoop	-	-	-	S	S
Fog lamps (act as DRLs on RS Package models)	-	S	S	S	S
Headlamps, halogen composite with automatic exterior lamp control	S	S	S	S	S
Headlamps, high intensity discharge with integrated halo rings and automatic exterior lamp control (included and only available with RS Package)	-	A	A	A	A
Mirrors, outside power-adjustable, body-color	S	S	-	S	-
Mirrors, outside heated power-adjustable and driver side auto-dimming, body-color	-	-	S	-	S
Molding, Black roof ditch	S	S	S	S	S
Molding, body-color roof ditch (included and only available with RS Package)	-	A	A	A	A
Sill plate, Chevrolet	-	-	-	S	S
Spoiler, rear (included and only available with RS Package on LT)	-	A	A	S	S
Tail lamps, RS unique (included and only available with RS Package)	-	A	A	A	A
Tire sealant and inflator kit, in place of spare tire	S	S	S	S	S
Wheel and tire, spare compact	A	A	A	-	-

PACKAGES

Convenience and Connectivity Package: Includes Bluetooth® for phone, wireless PDIM, USB port, steering wheel-mounted audio controls, leather-wrapped steering wheel, leather-wrapped shift knob and cargo convenience net. Available on 1LT.

Interior Accent Trim Package: Includes Black leather-appointed interior with Inferno Orange accents on the seats, accent stitching on the steering wheel, shift knob, door armrest, and center console. Inferno Orange door trim and instrument panel appliqué. SS models include "SS" embroidery. Available on 2LT and 2SS.

RS Package: Includes 20" x 8" front and 20" x 9" rear flangeless, painted aluminum wheels with Midnight Silver finish (polished finish available for an additional charge), body-color roof ditch molding, high intensity discharge headlamps and RS unique tail lamps. LT models also include rear spoiler. Available on LT and SS.

	Camaro LT (1LT)	Nissan 370Z	Mitsubishi Eclipse GT	Camaro SS (1SS)	Ford Mustang GT	Dodge Challenger R/T
POWERTRAIN						
Engine	3.6L V6	3.7L V6	3.8L V6	6.2L V8	4.6L V8	5.7L V8
Horsepower @ rpm	304 @ 6400	332 @ 7000	265 @ 5750	Manual trans. 426 @ 5900 420 @ 4600	315 @ 6000 325 @ 4250	Manual trans. 376 @ 5150 410 @ 4300
Torque (lb.-ft.) @ rpm	273 @ 5200	270 @ 5200	262 @ 4500	Auto. trans. 400 @ 5900 410 @ 4300		Auto. trans. 372 @ 5200 401 @ 4400
Transmission	6-speed man. (S); 6-speed auto. (A)	6-speed man. (S); 7-speed auto. (A)	6-speed man. (S); 5-speed auto. (A)	6-speed man. (S); 6-speed auto. (A)	5-speed man. (S); 5-speed auto. (A)	5-speed auto. (S); 6-speed man. (A)
Recommended fuel	Regular unleaded	Premium unleaded	Premium unleaded	Premium unleaded ¹	Regular unleaded	Mid-grade unleaded (auto.) ¹ ; Premium unleaded (man.) ¹
Fuel economy, city/hwy (mpg)	17/29 (man.); 18/29 (auto.)	18/26	16/25 (man.); 16/24 (auto.)	16/24 (man.); 16/25 (auto.)	15/23 (man.); 15/22 (auto.)	16/25
Fuel tank (gal.)	19.0	19.0	17.7	19.0	16.0	19.0
SUSPENSION AND HANDLING						
Drivetrain	RWD	RWD	FWD	RWD	RWD	RWD
Front suspension	Double ball joint, multilink strut	Double-wishbone	MacPherson strut	Double ball joint, multilink strut	MacPherson Strut	Short-/long-arm w/ high upper "A" arm
Rear suspension	4.5-link independent	4-link independent	Low-mount multilink	4.5-link independent	3-link solid axle	5-link independent
Brakes, front/rear	4-wheel vented disc w/ ABS, BA	4-wheel vented disc w/ ABS, EBD, BA	4-wheel vented disc w/ ABS, EBD	4-wheel vented disc w/ four-piston Brembo calipers, ABS, BA	4-wheel vented disc w/ ABS	4-wheel vented disc w/ ABS, BA
Traction control	S	S	S	S	S	S
Stability control	S	S	S	S	S	S
Steering	Variable ratio rack-and-pinion	Vehicle speed-sensitive power rack-and-pinion	Rack-and-pinion	Variable ratio rack-and-pinion	Rack-and-pinion	Fixed- displacement, speed-sensitive rack-and-pinion (auto.); Variable displacement (man.)
Wheels	18" aluminum (S); 19" polished aluminum (A); 20" aluminum (A)	18" aluminum (S); 19" aluminum (A)	18" aluminum	20" aluminum (S); 20" polished aluminum (A)	18" aluminum (S); 19" aluminum (A)	18" aluminum (S); 20" aluminum (A)
Tires	P245/55R18 touring all-season (S); P245/50R19 touring all-season (A); P245/45ZR20 front and P275/40ZR20 rear summer (A)	P225/50R18 front and P245/45R18 rear summer (S); P245/40R19 front and P275/35R19 rear (A)	P235/45R18 all-season	P245/45ZR20 front and P275/40ZR20 rear summer	P235/50R18 all-season (S); P245/45R18 all-season (A)	P235/55R18 all-season performance (S); P245/45ZR20 three-season (A)
COMFORT AND CONVENIENCE						
Air conditioning	Single-zone manual	Single-zone automatic	Single-zone manual (S); Single-zone automatic (A)	Single-zone manual	Single-zone manual	Single-zone manual
Driver Information Center	S	-	-	S	-	A
Remote Vehicle Starter System	A	-	-	-	-	A
Driver seat adjustments	6-way power	8-way manual	4-way manual (S); 6-way power (A)	6-way power	4-way manual	8-way power

	Camaro LT (1LT)	Nissan 370Z	Mitsubishi Eclipse GT	Camaro SS (1SS)	Ford Mustang GT	Dodge Challenger R/T
COMFORT AND CONVENIENCE (cont.)						
Front passenger seat adjustments	2-way manual	4-way manual	4-way manual	2-way manual	2-way manual	2-way manual
Leather-appointed seating surfaces	-	-	A	S	-	A
Heated seats	-	-	A	-	-	A
Rear seat type	One-piece folding	No rear seat	50/50 split-folding	One-piece folding	Split-folding	60/40 split-folding
Tilt and telescoping steering column	S	Tilt only	Tilt only	S	Tilt only	S
Steering wheel-mounted controls	Cruise (S); Audio (A)	Cruise and audio	Audio (A)	Cruise	Cruise	Audio and DIC (A)
CD/MP3 player	S	-	S	S	-	S
Satellite radio	S	-	-	S	-	A
Premium audio	A	-	A	A	-	A (2)
Navigation system	S (OnStar Directions & Connections)	-	-	-	-	A (in-dash)
Bluetooth	A	-	-	-	-	A
Wireless PDIM	A	-	-	-	-	-
USB port	A	-	-	-	-	-
Auto-dimming rearview mirror	-	-	A	-	-	A
Compass	S	-	S	S	-	A
Universal Home Remote	-	-	-	-	-	A
Sunroof	A	-	A	A	-	A
Fog lamps	S	-	S	S	S	S
Automatic headlamp control	S	S	-	S	S	A
HID headlamps	A	S	-	A	-	A
Oil Life System	S	-	-	S	-	-
SAFETY AND SECURITY						
Frontal air bags	S	S	S	S	S	S
Side-impact air bags	S	S	S	S	S	-
Head-curtain side air bags	S	S	S	S	-	S
OnStar	S	-	-	S	-	-
SPECIFICATIONS (in.)						
Wheelbase	112.3	100.4	101.4	112.3	107.1	116.0
Length	190.4	167.1	180.4	190.4	188.1	197.7
Width	75.5	72.6	72.2	75.5	73.9	75.7
Height	54.2	51.8	53.8	54.2	55.6	57.1
Track, front/rear	63.7/64.1	61.0/62.8	61.8/61.8	63.7/63.7	62.3/62.9	63.0/63.1
Curb weight (lbs.)	3728 (man.); 3719 (auto.)	3232 (man.); 3269 (auto.)	3479 (man.); 3545 (auto.)	3849 (man.); 3902 (auto.)	3533 (man.); 3575 (auto.)	Not published (man.); 4041 (auto.)
INTERIOR DIMENSIONS (in.)						
Seating capacity	4	2	4	4	4	5
Head room, front/rear	37.4/35.3	38.2	38.5/34.6; 37.5/34.6 (w/ moonroof)	37.4/35.3	38.5/34.7	39.3/37.2
Leg room, front/rear	42.4/29.9	42.9	42.8/29.2	42.2/29.9	42.4/29.8	42.0/32.6
Shoulder room, front/rear	56.9/42.5	54.5	54.2/51.2	56.9/42.5	55.3/51.6	58.2/48.6
Trunk capacity (cu. ft.)	11.3	6.9	15.7	11.3	13.4	16.2
WARRANTY (years/miles)						
Bumper-to-bumper	3/36,000	3/36,000	5/60,000	3/36,000	3/36,000	3/36,000
Powertrain	5/100,000	5/60,000	10/100,000 ²	5/100,000	5/60,000	Lifetime ³
Roadside assistance	5/100,000	A	5/unlimited	5/100,000	5/60,000	3/36,000
Courtesy transportation	5/100,000	-	-	5/100,000	-	-
Corrosion	6/100,000	5/unlimited	7/100,000	6/100,000	5/unlimited	5/100,000

¹ Regular unleaded may be used, but at reduced performance.

² New vehicle owners only. Duration for subsequent owners is 5 years or 60,000 miles.

³ Not transferable to subsequent owners. Requires dealer inspection every 5 years.



Many Camaro customers are interested in personalizing their vehicle, and Camaro is available right from launch with several exciting accessory offerings. As with all other Chevy Accessories, Camaro accessories are engineered to meet strict OEM quality standards and undergo testing for performance, durability and safety. In addition, Camaro accessories can be financed with the vehicle price and include a 3-year/36,000-mile warranty when installed at delivery. Accessories installed after delivery are covered for the remainder of the GM New Vehicle Warranty or 12 months/12,000 miles, whichever is greater.

» Exterior Accessories

- Fuel door
- Grille insert
- Exterior car covers (offered in Red or Black)
- Quarter Flares (7 colors)
- High wing spoiler (4 colors)
- Ground effects kit
- Two stripe packages
 - Hood and Hockey Stripe (3 colors)
 - Rally Stripe (5 colors)
- Engine covers – V6 and V8 (5 colors)
- 21-inch wheels (Black or Machined Aluminum)

» Electrical Accessories

- Foot well lighting
- RPO PDIM
- RPO Remote start
- Subwoofer



» Interior Accessories

- Cargo floor mat
- Interior Trim Kit
- RPO Cargo net
- RPO Sill plates
- Smoker's Package



» Performance Accessories

- Air intake
- Enhanced exhaust system
- Shorty headers
- Hurst short throw shifter



2010 CAMARO



This material is not legally approved for use in any advertising. It is intended for use by dealership employees only and is not to be disseminated to, or reviewed by, consumers. Information contained herein is designed to be as comprehensive and factual as possible. General Motors reserves the right, however, to make changes at any time, without notice, in materials, equipment, specifications, models and availability.

Competitive vehicle information based on 2009/2010 models. Competitive information in this book gathered from sources published by competitive manufacturers.

Copyright 2009 General Motors Corporation. All Rights Reserved. No portion of this work may be reproduced, rebroadcast or redistributed, in whole or in part, without the express written permission of General Motors Corporation.

Printed in U.S.A. March 2009

Course Number: B10CM.010P

SKU Number: B10CM010P