

2010-2013 Camaro RS or SS/2012-2015 Camaro ZL1

Custom Bracket & Designs D2S projector retrofit

These instructions are intended for AFTER the removal of the front bumper. You can find that video by 1A here: <https://youtu.be/QEJPlxlyuaA?t=24> or scan the QR Code with your phone



Tools needed for this project:

7mm socket

T15 bit

T20 Bit

8" socket extension

¼" Socket ratchet

Wire cutters/strippers

Soldering Iron

Solder & Flux (Flux optional)

Heat shrink tube (down to 1/8" after shrinking)

¼" to hex drill bit adaptor

Low speed drill (Optional)

Parts can be bought here (Or scan QR Code):

<https://custom-brackets-designs.myshopify.com/products/2010-2015-chevrolet-camaro-micro-d2s-retrofit-kit?variant=40088940970061>



Parts used (For the OEM+ Ballast Full Kit Includes):

-C Brackets from CB&D

-CB&D Micro D2S Projectors

-Morimoto D2S to D1S Adaptors (If using OEM Ballasts)

-Phillips or OSRAM D2S Bulbs

1. With the headlights off the car, remove the back cap then the OEM ballast by removing 3x 7mm bolts as shown in the picture.

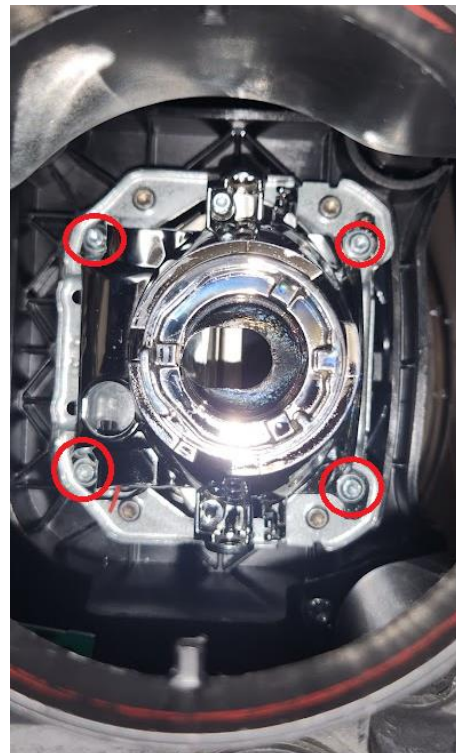
Removing the ballast will give you significantly more light into the headlight and access into the OEM projector.

WARNING: HIGH Voltage
Can Be Inside the Ballast!



2. Remove the OEM D1S bulb by turning the black lock collar counterclockwise. Disconnect the Black connectors (GRN/BLK and RED/BLK) for the high beam trigger (not pictured).

3. Remove the 4x T15 screws holding the projector bowl to the OEM bracket. This will allow you to remove the projector reflector bowl. Guide the black connector with RED/BLK wires through the bowl as you remove it

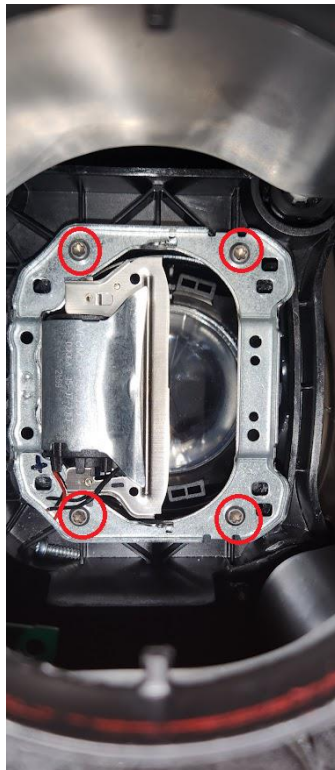


4. Once all four screws are out, you can lift and turn the silver reflector sideways to remove it through the back of the housing as shown in the picture.

NOTE: You will have to rotate the reflector bowl to remove it.



5. Remove the 4x T20 screws to release the bracket from the housing. Turn the bracket sideways with the solenoid side by the opening for the ballast (2nd Picture).



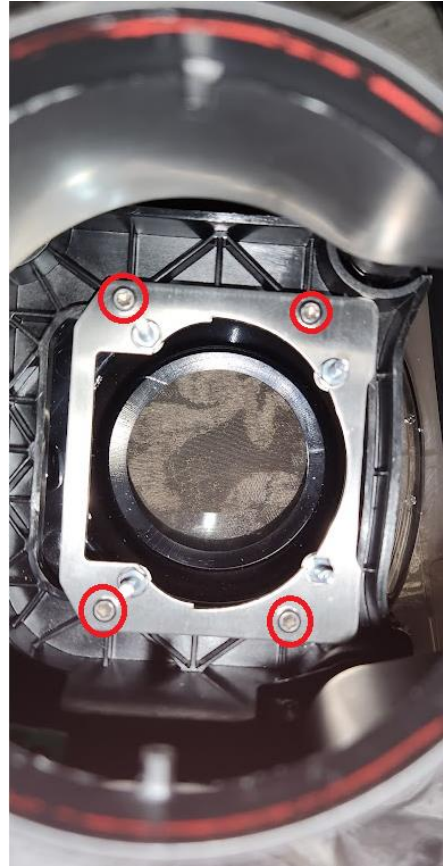
6. Remove the lens that is in the bottom of the housing. Turn it sideways, the same direction as the bracket to remove through the back of the housing.



7. Assemble your new C Bracket as shown. **DO NOT completely tighten the nuts as they will need to be adjusted inside the housing.** Finger tight only.



8. Install the bracket with the studs facing UP through the back hole. You will re-use the stock T20 screws to install the bracket. **Do not overtighten!** They are coarse thread into plastic. Take care as to not overtighten the screws as they will strip easily. Tighten just to a firm snug.



9. To prepare your new projector. Take a 3/16" drill bit and enlarge the holes on the projector slightly larger. Then route your new high beam wires as shown. Do not worry, they will not get pinched.

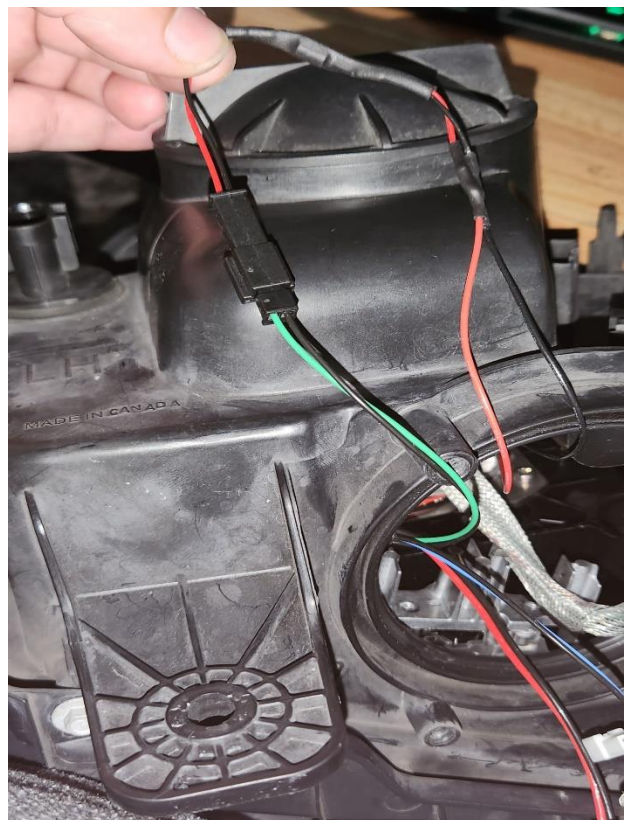


10. Angle your new projector as shown to lower it in. You will need to ensure the wires are towards the bottom near the ballast opening as shown in the 2nd photo. Adjust the projector until it sits fully flush on the nuts on the bracket/studs. Then use the included 7mm nylon lock nuts to secure it down. (2nd Picture)

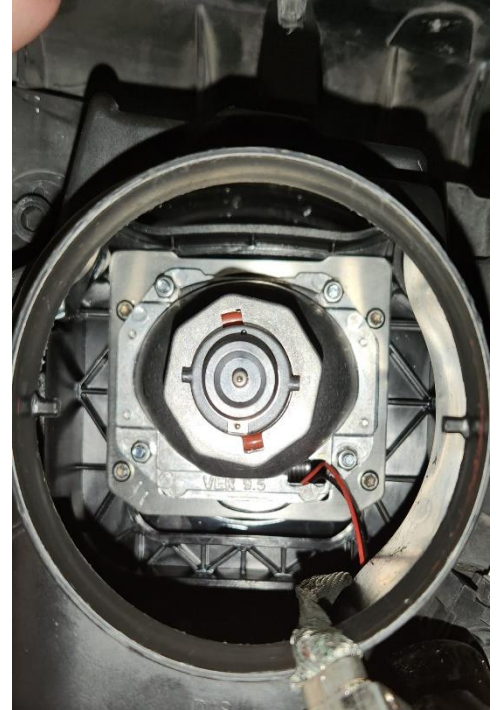
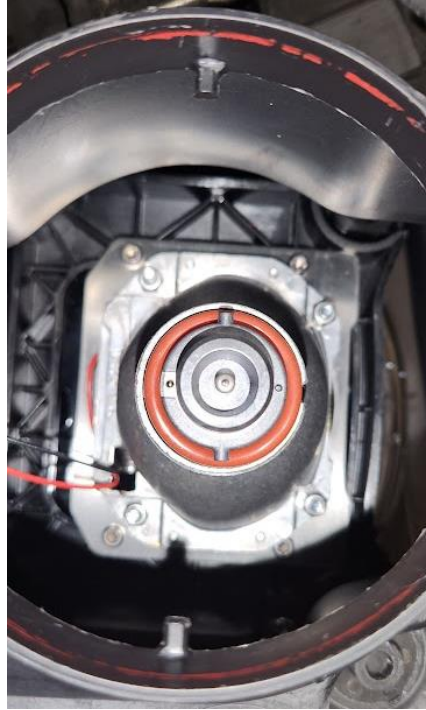


Optional:

Cut the black high beam solenoid connector off the new projector and solder on the OEM connector to retain OEM integration.



11. Insert your new D2S bulb with the red O-ring (included with the projectors) as shown then put the retention nut and firmly snug it until you feel it lightly click on the last turn.



12. Reconnect your ballasts to your Morimoto D2S to D1S adaptor ignitor and install it in the 5 o'clock position (press it down onto the bulb) and rotate to the 6 o'clock position.



13. Reinstall the ballast to the bottom of the housing with the 3x 7mm bolts and the bulb cover cap (both pictured in the first step)



Follow the same instructions for the other headlight.
Once complete, you can bolt them back onto the car and
enjoy your brighter headlights